



SHREE RAM COLLEGE OF PHARMACY

Approved by AICTE - PCI, New Delhi,
Affiliated to BTE, Lucknow

D.Pharma

Two Years Diploma Course

Diploma in Pharmacy (D.Pharm) is a two-year academic programme streamlined to endow in-depth knowledge of science and technique



behind the formulation of pharmacy and medicines management. The programme fundamentally provides an overview of the conjecture principles and practices implicated in the science of pharmacy including core subjects like Pharmaceutical Chemistry Pharmacognosy Pharmacology and Pharmaceutics.

The curriculum and syllabi for the programme are as per the Pharmacy Council of India (PCI) the statutory body governing pharmacy profession in India. In this programme students will gain insights into the chemical and physical properties chemical structure and uses of pharmaceutical



***A CAREER WHICH OFFERS
VARIED OPPORTUNITIES***



formulae. The programme encompasses knowledge about the natural medicines which are obtained from plants animals marine and biological sources.

In addition the programmed focuses on imparting knowledge about drugs used for different diseases dosage absorption mechanism of action drug action drug interaction adverse reaction. Candidates seeking advance knowledge in the discipline can apply for higher education.



SHREE RAM COLLEGE OF PHARMACY

Approved by AICTE - PCI, New Delhi,
Affiliated to BTE, Lucknow

Laboratory
Facility



SHREE RAM

COLLEGE OF PHARMACY

Approved by AICTE - PCI, New Delhi,
Affiliated to BTE, Lucknow

Pharmaceuticals
Lab



SHREE RAM COLLEGE OF PHARMACY

Approved by AICTE - PCI, New Delhi,
Affiliated to BTE, Lucknow

Pharmaceutical
Chemistry Lab



SHREE RAM

COLLEGE OF PHARMACY

Approved by AICTE - PCI, New Delhi,
Affiliated to BTE, Lucknow

Pharmacognosy
Lab



SHREE RAM

COLLEGE OF PHARMACY

Approved by AICTE - PCI, New Delhi,
Affiliated to BTE, Lucknow

Pharmacology
Lab

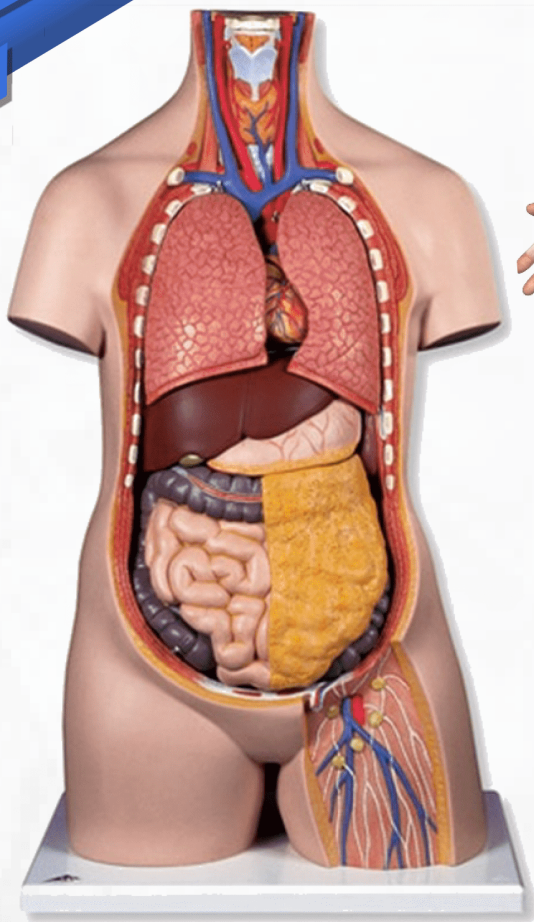


SHREE RAM

COLLEGE OF PHARMACY

Approved by AICTE - PCI, New Delhi,
Affiliated to BTE, Lucknow

Human Anatomy And Physiology Lab



SHREE RAM COLLEGE OF PHARMACY

Approved by AICTE - PCI, New Delhi,
Affiliated to BTE, Lucknow

Central Instrumental
Lab

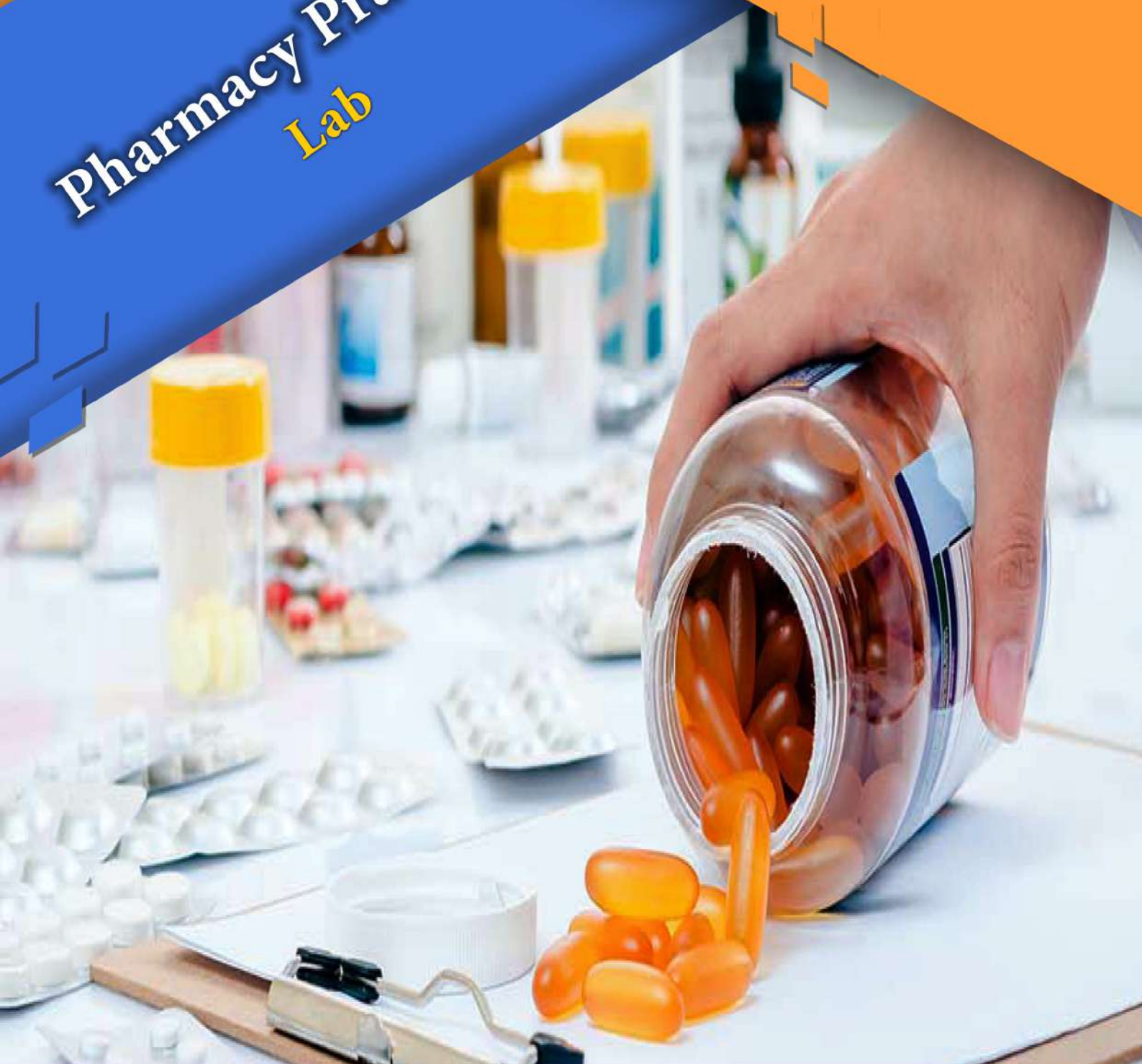


SHREE RAM

COLLEGE OF PHARMACY

Approved by AICTE - PCI, New Delhi,
Affiliated to BTE, Lucknow

Pharmacy Practice
Lab



SHREE RAM COLLEGE OF PHARMACY

Approved by AICTE - PCI, New Delhi,
Affiliated to BTE, Lucknow

Biochemistry & Clinical Pathology Lab

